



FALMOUTH  
HARBOUR

UK's Atlantic gateway.

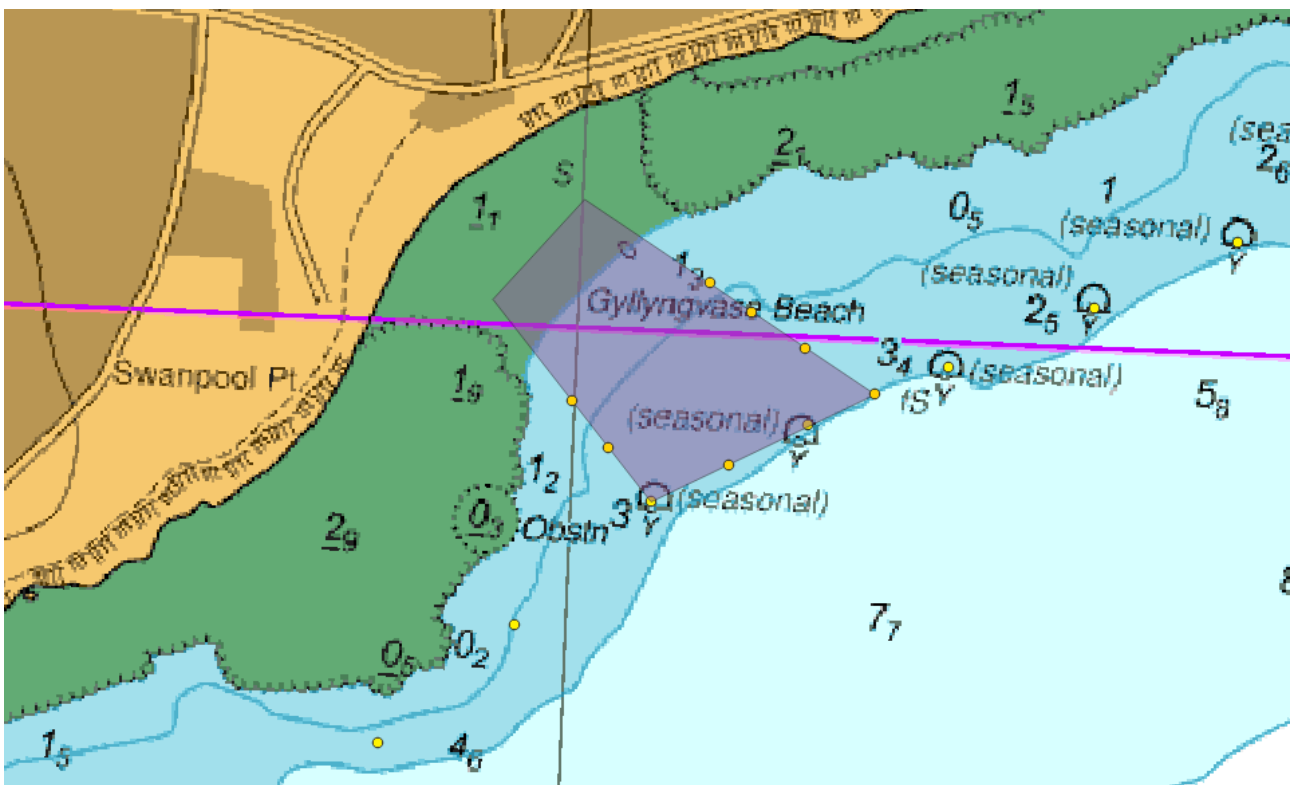
**Monday 24th February 2025 - NOTICE OF CONSULTATION  
Falmouth Harbour (Beach Safety (Restricted Vessel) Zone)  
Harbour Directions 2025 NO.xx**

**Proposed Introduction of a New Harbour Direction at Falmouth Harbour  
Beach Safety (Restricted Vessel) Zone (BS(RV)Z)  
at Gyllyngvase Beach, Falmouth UK**

**Purpose:**

The purpose of this proposed, Harbour Direction is to introduce a new **Beach Safety (Restricted Vessel) Zone** at Gyllyngvase Beach, Falmouth UK, to establish a safe area for water users, while also maintaining access for vessels, who wish to access the beach. The **Beach Safety (Restricted Vessel) Zone** will be marked by buoys and supported with appropriate signage to ensure vessels are aware of the restricted zone.

The primary purpose of the **Beach Safety (Restricted Vessel) Zone** is to enhance safety and reduce the risk of accidents involving vessels and people near Gyllyngvase Beach, by separating water users.



© Crown Copyright and/or database rights. Reproduced by permission of The Keeper of Public Records and the UK Hydrographic Office ([www.GOV.UK/UKHO](http://www.GOV.UK/UKHO))

## **Falmouth (Restricted Vessel Zone) Harbour Directions 2025 NO.1**

Notice is Hereby Given that the Commissioners of Falmouth Harbour, a Designated Harbour pursuant to The Harbour Directions (Designation of Harbour Authorities) Order 2015 wish to exercise the powers conferred by section 40A of the Harbours Act 1964(b), and are consulting in accordance with section 40B on the following direction in respect of vessels navigating in the proximity of Gyllyngvase beach.

### **The Direction:**

The vessel direction is as follows:

## **PART 2 PROVISIONS AS TO VESSELS**

### **Exclusion from the Restricted Vessel Zone**

*Except with the prior permission of the Harbour Master or in accordance with paragraph (2), the Master of a Vessel must not permit the Vessel to enter or be Underway within the **Beach Safety (Restricted Vessel) Zone**.*

*(2) Paragraph (1) shall not apply—*

*(a) from dusk until dawn;*

*(b) to Vessels used by the RNLI to carry out patrols or rescues.*

The full direction is available on our website at [Falmouth Harbour in Cornwall](#),

**Compliance with Harbour Directions** - It is the duty of the Master to which a Harbour Direction is given to comply with the direction. The giving of a Harbour Direction does not diminish or in any other way affect the responsibility of the Master in relation to their Vessel, persons on board, its cargo or any other person or property. The Master of a Vessel who fails to comply with such a Harbour Direction without reasonable excuse is liable on summary conviction to a fine not exceeding Level 4 on the standard scale (section 40C of the Harbours Act 1964).

**Notes to the Harbour Directions** - Some of the Harbour Directions are accompanied by notes which are written in italics. These notes provide additional information to further explain a Harbour Direction and do not form part of that Harbour Direction.

Falmouth Harbour are now commencing a public consultation to ensure that all interested parties, including harbour users, stakeholders, and the wider community, have the opportunity to provide feedback on the proposed direction. Your feedback is important to us and will help shape the final decision on this Harbour Direction.

This notice commences the consultation period that will last for 28 days, beginning on Monday 24th February 2025 at 09:00 and closing 17:00 Monday 24th March 2025

During this time, we encourage you to review the proposal and share your views. A copy of the draft **Falmouth (Beach Safety (Restricted Vessel) Zone) Harbour Direction** and supporting documents including a detailed FAQ can be found on our website at [Falmouth Harbour in Cornwall](#), or you can request a copy by contacting us at address below.

There will be a community consultation event on Thursday 13<sup>th</sup> March 2025 from 14:00 to 19:00 at Gylly Beach Cafe, Gyllyngvase Beach, Cliff Road, Falmouth, TR11 4PA.

Written responses can be submitted via email to the Harbour Master [hm@falmouthharbour.co.uk](mailto:hm@falmouthharbour.co.uk), or by post to the address below, clearly marked as "Consultation on Proposed Harbour Direction."

The Harbour Master  
Falmouth Harbour Commissioners  
44 Arwenack St  
Falmouth  
TR11 3JQ

**Consultation Close: All responses to the Order must be received by 17:00 24<sup>th</sup> March 2025.**

Ifor Pedley  
Harbour Master