



FALMOUTH HARBOUR

BUNKER VESSEL INFORMATION PACK

UK's Atlantic
Gateway



OVERVIEW



Falmouth has a world-renowned reputation as a refuelling stop for ships. Acting as the UK's western most outpost for deepwater bunkering at the head of the English Channel and close to major European Ports.

The Harbour's unique geography creates one of the most sheltered deepwater anchorages in the English Channel area, enabling year-round bunkering with minimal delays and quick turnaround times.

- Anchorages in Falmouth Bay can accommodate up to loaded VLCC size, sheltered from the prevailing West / Southwest winds.
- Anchorages in the Carrick Roads offer anchorages for vessels up to 185m LOA, sheltered from Easterly winds.
- Close proximity to wider port services including personnel transfer and ships stores.
- Pilotage service available 24/7.
- Minimal waiting or delay times for ships.

BOOKING INFORMATION

See Admiralty List of Radio Signals Volume 6 for Port and Pilotage Information, or see our website: www.falmouthharbour.co.uk

CONTACT DETAILS

Email: portoperations@falmouthharbour.co.uk
Phone: (UK code +44) 01326 211395 or 07836 661668
VHF: Channel 09

LOCAL SHIPS AGENTS

We request that all vessels appoint a local agent to ensure smooth coordination of services.

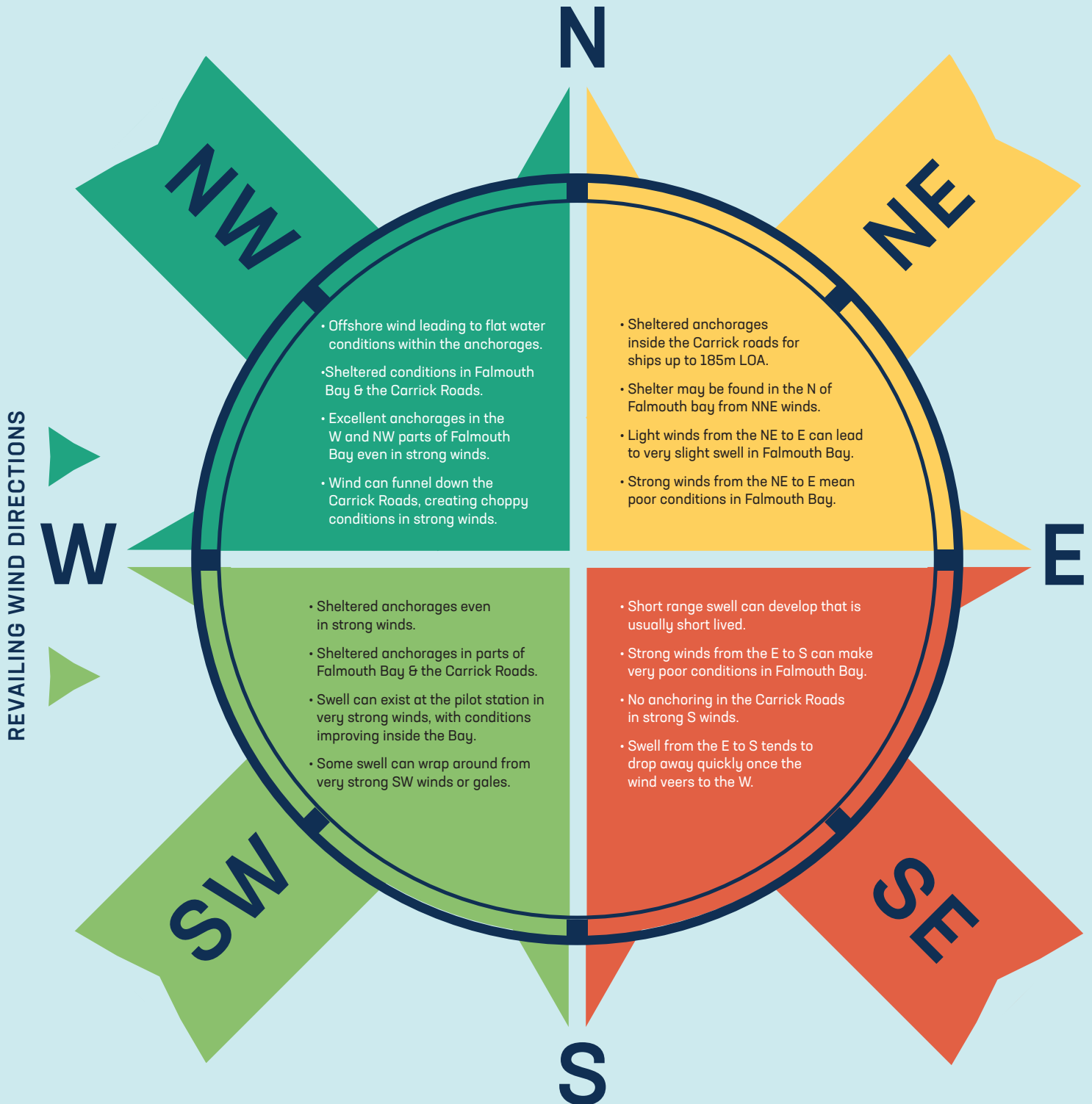
ETA UPDATES AND ARRIVAL PLANNING - VIA AGENT

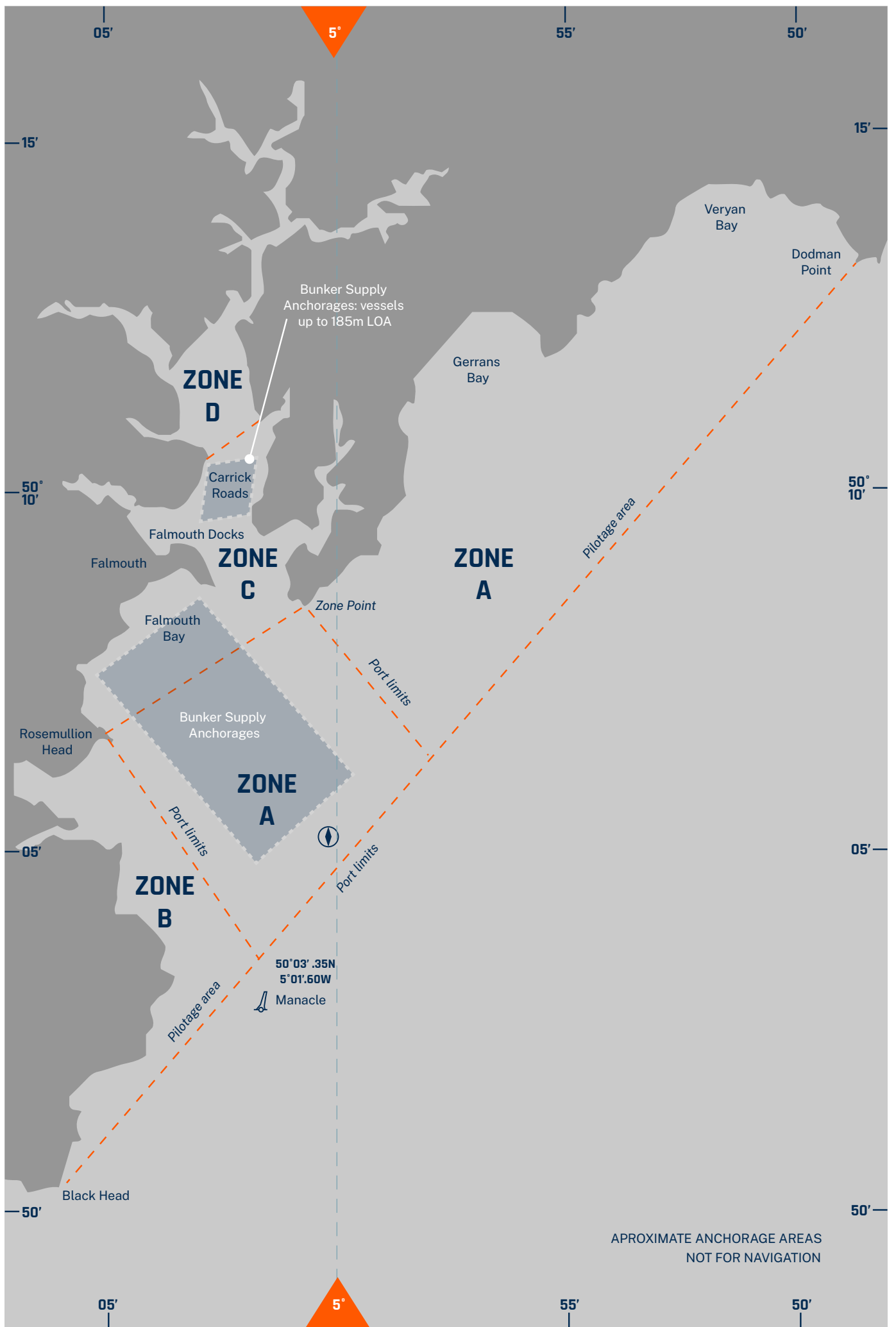
1. Email initial notification, completion of all pre arrival documents including the PNF.
2. Update any ETA updates via email at 72h, 48h, 12h and 6hrs where possible.
3. Provide as much notice as possible via VHF CH 09 followed by 1hrs confirmation.
4. Listen for instructions from the Pilot Boat Coxswain.

WEATHER INFORMATION

Falmouth Harbour offers sheltered anchorages in a range of conditions all year round, with Falmouth Bay providing sheltered anchorages for ships of all sizes from the prevailing West / Southwest winds.

The below weather notes are available to aid operational planning and safe working, vessel and agents are encouraged to discuss enquires with 'Falmouth Pilots'







INFORMATION FOR MASTERS

The anchorages inside Port Limits offer the best opportunity for safe and efficient bunker supply operations, providing good holding and shelter from the prevailing Atlantic weather systems and swell.



BUNKERING LOCATIONS

The exact location for bunker supply ops will be decided during pilot master exchange, following discussion with the bunker supply vessel and with consideration given to the weather conditions and forecast. Typically, this will be:

- Falmouth Bay Anchorages
(vessels of unrestricted size)
- Carrick Roads, Cross Roads Anchorage
(vessels up to 185m LOA)

Vessels proceeding to the Crossroads Anchorage must have two working anchors as they will be required to complete a 'running moor' utilizing both cables.

Vessels alongside at Falmouth Docks can also receive bunkers, with permission granted by the berth operator.

COMMUNICATIONS

Vessels undertaking bunkering are expected to provide **'Falmouth Pilot Radio' on VHF ch 09** with commencement and completion of bunkering times along with ETD's.

BUNKER SUPPLIERS

Falmouth is open to responsible bunker supply companies and a number of regional operators use it's sheltered waters for safe and efficient supply ops.



SAFE OPERATIONS

All bunker operations must take place in accordance with shipboard operating procedures, risk assessments and safe working practices – prioritising safety at all times.

The decision as to whether bunkering should take place lies with the master's of the delivery and receiving vessels – if any party has safety concerns the transfer should be stopped and reassessed.

INSTANCES OF POOR WEATHER

It is the decision of the bunker barge master and the receiving vessel master whether it is safe for bunkering to commence and to monitor weather conditions and forecasts at all times.

In instances of poor or extreme weather where the safety of operations may be compromised, vessels are expected to cease operations immediately.

Where vessels arrive in poor weather and need to wait for an improvement to complete bunkering, they may be requested to wait outside port limits.

In instances of prolonged gale force winds from the South or Southeast the anchorages in Falmouth Bay may become untenable, in such conditions vessels are expected to maintain a state of immediate readiness and may be requested to vacate the anchorage.

BUNKER BARGE APPROVAL PROCESS

Falmouth Harbour has a bunker barge approval process in place for all vessels wishing to deliver bunkers to ships within the Harbour Area.

The process is quick and efficient for bunker supply vessels in regular operation and involves vetting of ship documentation, oil spill response provision and recent drill records – including a ship visit.

PECS (PILOTAGE EXEMPTION CERTIFICATES)

PEC's are available for regular operators specific to operating areas within the Falmouth Harbour Area following a criteria of assessment and qualifying passages.

For new barge Approvals and PEC info please email: dutyhm@falmouthharbour.co.uk

IN THE EVENT OF AN INCIDENT

In the event of an incident vessels are expected to initiate their appropriate emergency response procedures immediately. Details should be reported to both:

**Falmouth Coastguard on VHF ch 16
Falmouth Pilot Radio on VHF ch 09.**

PILOT BOARDING / LANDING ARRANGEMENTS

All pilot ladders and combination ladders must be rigged in accordance with IMO SOLAS requirements.



PORT SERVICES

Falmouth is a busy working port offering a wide range of services to vessels of all types, delivered by experienced local operators and agents.

There is a range of Port Services available for ships at anchor including:

- Crew and personnel transfers.
- Ships stores and chandlers.
- Lube oil delivery.
- Underwater survey or dive inspection.
- Propellor polishing.

Falmouth Docks operated by APCL Group provides ship repair and refit facilities

including dry docks, cargo handling, lay by berths and facilities for cruise ships.

FALMOUTH HARBOUR

Falmouth Harbour is a statutory harbour authority with responsibility for the Inner Harbour at Falmouth Harbour (excluding Falmouth Docks), the Penryn River up as far as Coastlines Wharf, the southern part of the Carrick Roads and a large part of Falmouth Bay.



TRANSPORT LINKS & ACCOMMODATION

Falmouth has good transport links with a mainline train route and a regional airport all within easy reach by taxi.

TRAIN

Falmouth Train Station is just a five-minute walk from the commercial port, with trains running regularly to the main line service at Truro.

Truro Train Station offers regular trains to London, Bristol, and Exeter.

AIRPORTS

Cornwall Airport (Newquay):
REGIONAL AND SOME INTERNATIONAL FLIGHTS

Exeter Airport:
REGIONAL AND SOME INTERNATIONAL FLIGHTS

Bristol Airport:
INTERNATIONAL AIRPORT

London Airports:
INTERNATIONAL AIRPORT



ACCOMMODATION

Falmouth is a bustling town and popular tourist destination with ample options for accommodation.



FALMOUTH HARBOUR

BUNKER VESSEL INFORMATION PACK



+44 01326 211395
portoperations@falmouthharbour.co.uk
44 Arwenack Street
Falmouth TR11 3JQ
United Kingdom

Lat/Long
50.1397° N, 5.0846° W